

# A STONE CARE SOLUTION

PREMIUM PRODUCT BY  
marble magik corporation  
a stone care solution

### IDEA - 2006

Back in the decade when Make in India was not even a concept in the chemical industry, two gentlemen, Mr. Mital Patel and Mr. Pramod Salunke, emphasised on this idea and came together to build an organisation in the space of stone care solution.

### INDIAN MARKET -2008

Marble Magik Corporation began operating in the Indian market in 2008 by analyzing and developing a country-wide business network. The company operates within the B2B sector, where the distribution channel set up to deal with chemical distributors began with few distributors and, over the years, MMC has expanded its network to more than 125 distributors in the Indian stone care chemical Market. Starting with limited stone care chemicals, MMC now produces more than 100 products, ranging from stone care chemicals, adhesives, polishing pads to construction chemical supplements.

### EXPORTS - 2013

We began our foreign activity soon after half a decade in the form of exports to more than 5 countries. There was a great need for quality stone care chemicals, and we were able to bridge that gap overseas. Today, we export to more than 13 countries around the globe.

### CONCEPT OF MAGIK SHOPPE -2017

No one really dreamed of a dedicated showroom for the marketing of stone care chemical products. That's exactly when we launched the Magik Shoppee idea. The Magik Shoppee is an exclusive store designed to market the full product line of MMC's. We were able to open three Magik Shoppee shops in India in the period of one year.

### WAREHOUSE -2019

The distribution from Surat, Gujarat where the manufacturing unit is in place, was started in 2008 by MMC. Marble Magik Corporation in 2019 decided on the opening of the warehouses in Delhi and Bengaluru for easy management of the Northern and Southern regions of India by connecting with distributors across India, required for smooth logistics and handling process.

### FUTURE

MMC is preparing to expand its network to 500 marks in the coming future to grow towards becoming India's most preferred and loved brand. Altogether, we take pride in being the Indian company, strengthening the objective of the Make in India Initiative, which is helping to develop the nation on a global scale. Being a Vocal for Local our dream is to be the leading stone care solutions.







# PRODUCT RANGE

## STONE CARE RANGE

### GROUTS

High Strength Epoxy For Stone

4

### SEALER

High-end Protectors For Stone

7

### ENHANCER

High-end Enhancing Stone Protectors

10

### ANTI SLIP

Prevent Slip in Wet Area

13

### POLISHING COMPOUND

High Gloss with Anti Slip Effect

14

### CLEANER

Deep Cleaning Solution for Stone

16

### BONDING AGENT

Non Shrinking With Good Binding

20

## POLISHING PADS

### DIAMOND PADS

High Glaze Surface Finish

21

## ADHESIVE RANGE

### STONE ADHESIVE

High Strength Adhesive For Stone

22

## CONSTRUCTION RANGE

### REPAIR & WATERPROOFING

High Performance Construction Chemicals

24

Stone Treatment Swarwed Mahamandir Trust  
Varanasi, INDIA



# GROUTS

## High Strength Epoxy For Stone

G111



### MAGIK STAIN FREE EPOXY

Magik Stain Free Epoxy is a water cleanable solid epoxy mortar and non sagging system for joint filling of tiles and stone. This kind of joint filling requires high strength. *Part A : Resin, Part B : Hardner, Part C : Filler*

#### ADVANTAGES

- Can be used as anti-bacterial, anti-fungle property in kitchen, operation theater, sterilization room and hospital
- Can be used in heavy traffic area
- Use as mortar and grout filling where extremely high strength is required
- Decorative purpose in swimming pools, malls, bungalows, factory etc

#### SUITABLE SURFACE

- Ceramic tiles
- Vitrified tiles
- Stone

#### AVAILABLE SERIES

- Regular Series (34 colours)
- Sparkle Series (44 colours)
- Magik Series (customized)



COVERAGE	COLOUR	PACK SIZE
As per Chart	A - Hazy, B - Pale Yellow, C - Pigmented	1 kg (A - 0.18, B - 0.07, C - 0.75) 5 kg (A - 0.90, B - 0.35, C - 3.75)

- Coverage shown in chart are approx. & for estimating purpose only.
- Calculate 10-15% additional material for wastage.
- Always use one batch at one site.
- Colour shown in shade card are for indication only.
- Approx. coverage in sq ft for 5 kg of Magik Stain Free Epoxy Unit.

TILES SIZE (MM)	2	3	4	5	6	7	8	10	12
100 X 100 X 2	400	269	202	164	136	116	104	93	71
150 X 150 X 4	297	200	153	120	93	87	78	56	53
200 X 200 X 5	318	213	162	128	107	93	82	66	55
200 X 300 X 6	316	211	159	126	105	91	80	64	54
300 X 300 X 6	395	265	199	159	135	115	102	82	69
400 X 400 X 6	526	353	265	212	177	152	135	107	91
450 X 450 X 7	507	340	255	205	173	159	128	102	86
500 X 500 X 8	494	331	247	178	165	127	125	100	84
600 X 600 X 8	592	396	297	237	198	170	147	120	100



**G119 G126**

## MAGIK EPOXY GEL

Magik Epoxy Gel is used in the stone working industries for the weather resistance bonding and glueing of natural stone as well as artificial stone building materials. *Part A : Resin, Part B : Hardner*

1. G119 - Magik Epoxy Gel \*
2. G126 - Magik Epoxy Gel Super \*\*

### ADVANTAGES

- Neutral colour
- Non yellowing
- High creeping strength
- Very low shrinkage
- Good adhesion
- Easily pigmented
- Good thermal stability

### SUITABLE SURFACE

- Marble
- Granite
- Natural Stone

COVERAGE N/A	COLOUR A - Hazy Transparent B - Hazy Transparent	PACK SIZE 0.90 kg (A - 0.60, B - 0.30)** 2.25 kg (A - 1.50, B - 0.75)*
-----------------	--	--

**G120**

## MAGIK EPOXY 100:50

Magik Epoxy 100:50 is a two component solvent added medium viscous liquid to fill porosity, hairline crack and holes. *Part A : Resin, Part B : Hardner*

### ADVANTAGES

- Easily pigmented
- High strength
- Moderate UV resistance
- Good adhesion

### SUITABLE SURFACE

- Marble
- Granite
- Engineered stone

COVERAGE N/A	COLOUR A - Clear B - Clear	PACK SIZE 3 kg (A - 2, B - 1) 7.50 kg (A - 5, B - 2.50)
-----------------	----------------------------------	---

**G113 G125**

## MAGIK CLEAR EPOXY

Magik Epoxy Clear is a two component low viscous liquid used to fuse natural as well as artificial stone to fill porosity, hair line crack, major crack and hold. System will also enhance the colour and gloss. *Part A : Resin, Part B : Hardner*

1. G113 - Magik Clear Epoxy SS (Mixing ratio 100:25)
2. G125 - Magik Clear Epoxy FS (Mixing ratio 100:50)

### ADVANTAGES

- Easily pigmented
- High strength after curing
- Excellent adhesion
- Very good glossy property
- UV resistant

### SUITABLE SURFACE

- Marble
- Granite
- Natural Stone

#### G113

COVERAGE N/A	COLOUR A - Clear B - Clear	PACK SIZE 1 kg (A - 0.80, B - 0.20) 5 kg (A - 4, B - 1)
-----------------	----------------------------------	---

#### G125

COVERAGE N/A	COLOUR A - Clear B - Clear	PACK SIZE 1.20 kg (A - 0.80, B - 0.40) 7.50 kg (A-5.00, B - 2.50)
-----------------	----------------------------------	---

**G115 G121**

## MAGIK MASTIC

Magik Mastic is a polyester based glue made up from the mix of resin and nano filler. It is specially used for joint filling for all types of marble, granite, natural as well as artificial stone. *Part A : Resin, Part B : Hardner*

### ADVANTAGES

- Easily pigmented
- High strength after curing
- Durable
- Excellent adhesion
- Very good glossy property

### SUITABLE SURFACE

- Marble
- Granite
- Engineered Marble

COVERAGE N/A	COLOUR As per Chart	PACK SIZE As per Chart
-----------------	------------------------	---------------------------

SUB PRODUCT	ASPECT	COLOUR	MIXING RATIO (A:B)	GEL TIME (MINUTE)	TACK FREE TIME (MINUTE)	VISCOSITY (CPS) (LAKH)	PACK SIZE (A+B) (kg)
SOLIDO/ LIQUID	THICK PASTE/ SEMI LIQUID	- ULTRA WHITE - DUSTY LIGHT - DUSTY DARK - IVORY - BLACK	100:3	3-6	15-20	3 - 4.25 / 0.14 - 0.18	1.500 + 0.045
THASOS CRYSTALLINE	GEL LIKE PASTE	ICE LIKE HAZY	100:1.5	20-25	60-90	N/A	1.000+ 0.020
THASOS THIXOTROPIC	THIXOTROPIC PASTE	ICE LIKE THIXOTROPIC	100:1.5	20-25	60-90	N/A	1.000+ 0.020
PASTE	GEL	- TRANSPARENT - HONEY	100:3	3-6	15-20	3 - 4.25	1.500+ 0.045
LIQUID	LIQUID	WATER LIKE CLEAR	100:1.5	20-25	60-90	0.004-0.005	1.000+ 0.020

**G114**

## MAGIK MP EPOXY

Magik MP Epoxy is a UPR based liquid with low viscosity use for crack filling as well as joint filling of all type of marble, granite and natural stone. *Part A : Resin, Part B : Hardner*

### ADVANTAGES

- Easy to pour in pinholes and crack of marble, granite and natural stone
- Easily pigmented
- High strength after cure
- Durable

### SUITABLE SURFACE

- Marble
- Granite
- Natural stone

COVERAGE N/A	COLOUR A - Clear B - Clear	PACK SIZE 1.05 kg (A - 1, B - 0.05) 5.25 kg (A - 5, B - 0.25)
-----------------	----------------------------------	---

### COMPARATIVE TECHNICAL SPECIFICATIONS

PRODUCT CODE	MIXING RATIO	GEL TIME / POT TIME @25°C (MINUTES)	TACK FREE TIME @25°C (HOURS)	MIX VISCOSITY (CPS)	UV STABILITY
G111	A:B:C 100:40:410	35-40	6-7	25000 to 30000	YES
G113/G125	A:B 100:25/100:25	60-70/30-40	8-10/3-4	400±50/550±50	YES/YES
G114	A:B 100:1.50	20-30	2-3	500±50	MODERATE
G119/G126	A:B 100:50	30-40	4-5	-	YES
G120	A:B 100:50	25-30	3-4	500±50	MODERATE
G121	A:B 130:10	35-40	6-7	25000 to 30000	YES



## G116

### MAGIK COLOUR PASTE

Magik Colour Paste is a unique colour that will match with UPR, epoxy and PU resin with minimum of quantity to get a desired colour.

#### AVAILABLE COLOURS

- White
- Red
- Green
- Black
- Ivory
- Brown
- Yellow
- Grey

#### SUITABLE SURFACE

- Marble
- Granite
- Natural Stone

COVERAGE N/A	COLOUR Differs	PACK SIZE 0.04 kg
-----------------	-------------------	----------------------

## G122

### MAGIK CEMENTITIOUS GROUT

Magik cementitious grout is a selective prepared blend of Portland cement, graded fillers and colour-fast pigments. It is designed for joint width 1mm to 3mm, for absorbent type tiles, clay tiles, and marble & glazed wall tiles. Suitable for internal and external applications.

#### ADVANTAGES

- Colourfast
- Weather resistance
- Non-shrink
- Easy application

#### SUITABLE SURFACE

- Ceramic tiles
- Vitrified tiles
- Stone
- Marble

COVERAGE N/A	COLOUR Differs	PACK SIZE 1 kg
-----------------	-------------------	-------------------

## G124

### MAGIK AQUA GROUT

Magik AquaGrout is an invisible adhesive grout to fill and fix. It enhances the beauty of glass mosaic. After application it looks like glass which is easy to wash and keeps the surface clean. *Part A : Resin, Part B : Hardner*

#### ADVANTAGES

- Can be used as anti bacterial and anti fungal property
- Suitable for damp environment
- Retaining the aesthetic beauty of mosaic

#### SUITABLE SURFACE

- Glass mosaic

COVERAGE N/A	COLOUR A - Hazy Paste B - Pale Yellow	PACK SIZE 3 kg (A - 2.79, B - 0.21)
-----------------	---	---

## G123

### MAGIK GROUT ADMIX

Magik Grout Admix is used in place of water which will improve the performance of Portland cement grouts. Very well use for interior and exterior floor and wall joints of all types of ceramic tile, vitreous, semi-vitreous tile, glass mosaic tiles, stone. No curing required when using Magik Grout Admix.

#### ADVANTAGES

- Will improve the flexibility of grout
- Water and shock resistance
- Easy maintenance

#### SUITABLE SURFACE

- Ceramic tiles
- Vitrified tiles
- Stone
- Marble

COVERAGE N/A	COLOUR Milky White	PACK SIZE 0.4 kg
-----------------	-----------------------	---------------------

#### PRODUCT SELECTION GUIDE - APPLICATION WISE

PRODUCT CODE	TILE GROUT 1-3 MM	TILE GROUT 2-12 MM	GLASS MOSAICS GROUT	STONE GROUT <2 MM	STONE GROUT 2-12 MM	PINHOLE FILLING	CRACK FILLING	GLUEING STONE TO STONE	GLUEING STONE TO OTHER	UPR PIGMENT	EPOXY PIGMENT
G111		✓	✓		✓						
G113						✓	✓				
G114						✓	✓				
G115				✓				✓*			
G116										✓	✓
G119				✓				✓	✓		
G120						✓	✓				
G121			✓								
G122	✓			✓							
G123	✓										
G124	✓		✓	✓							
G125						✓	✓				
G126				✓				✓	✓		

\* Magik Mastic Honey Paste only



**S223**



## MARBLE MAGIK WONDER

Marble Magik Wonder works on the concept of solidification. Product works on the concept of penetration and its structural filling hardens and solidifies surfaces. Due to high penetration in structural, micro gap gets excellent stain free property and very good luster finish on surface after polishing. It can be used for the top surface coating and also can be used as an additive for concrete.

### ADVANTAGES

- Ecological
- Very good penetration and damp proof
- No stain penetration
- No film formulation
- Easy cleaning
- Long lasting glossy finish
- Chemical process required one time only
- Solidification of marble and concrete

### SUITABLE SURFACE

- Concrete
- Marble
- Granite
- Natural stone

COVERAGE	COLOUR	PACK SIZE
1 L - 1 sq mt	Clear to slightly hazy	5 L, 10 L, 20 L



**S224**



## MARBLE MAGIK PRO

Marble Magik Pro protects the concrete and natural stone from high foot traffic and will not deteriorate or yellow over period of time. It is highly recommended on porous surface and provides more glossy sheen with stain repellent effect. Gives slightly darker look to concrete surface. Highly recommended as an additive for concrete.

### ADVANTAGES

- Ecological
- Very good penetration and damp proof
- No stain penetration
- No film formulation
- Easy cleaning
- Long lasting glossy finish
- Chemical process required one time only
- Solidification of marble and concrete

### SUITABLE SURFACE

- Concrete
- Marble
- Granite
- Natural stone

COVERAGE	COLOUR	PACK SIZE
1 L - 4 sq mt	Clear to slightly hazy	5 L, 10 L, 20 L



**S225**

## MARBLE MAGIK DENSIFIER

Marble Magik Densifier is an ecological water based treatment to solidify concrete or any stone and protect surface from dirt, food, mould and mildew. Product is highly recommended for porous surface and makes surface harden. Also used as an additive for concrete.

### ADVANTAGES

- Ecological
- Very good penetration and damp proof
- No stain penetration
- No film formulation
- Easy cleaning
- Long lasting glossy finish
- Chemical process required one time only
- Solidification of marble and concrete

### SUITABLE SURFACE

- Concrete
- Marble
- Granite
- Natural stone

COVERAGE	COLOUR	PACK SIZE
1 L - 4 sq mt	Clear to slightly hazy	5 L, 10 L, 20 L

**S222**

## MAGIK BACK COAT

Magik Back Coat is water based film forming come impregnator for protection of polished or rough marble, granite and natural stone from mortar stain as well as water marks.

### ADVANTAGES

- Prevent good resistance against mortar stain
- Easy to apply
- Good bond with cement mortar
- Penetrating cum film forming
- Natural look remain intact

### SUITABLE SURFACE

- Marble
- Granite
- Natural stone

COVERAGE	COLOUR	PACK SIZE
1 L - 10/15 sq mt	Milky white	1 L, 5 L, 10 L, 20 L

**S239**

## MAGIK SEALER HD

Magik Sealer HD design an invisible water resistance and UV stable coating for stone & glass surface. Coated surface result is breathable and aesthetic look remain as it is. Magik Sealer HD is available for 2 variant.

1. Magik Stone Sealer HD - Protect stone against lime & wine stain
2. Magik Glass Sealer HD - Easy cleaning of glass

### ADVANTAGES

- Super oleophobic effect
- UV stable
- Long lasting
- Easy cleaning
- Versatile

### SUITABLE SURFACE

- Stone
- Glass

COVERAGE	COLOUR	PACK SIZE
1 L - 30/35 sq mt	Transparent	0.5 L

**S227**

## MAGIK IMPREGNATOR WB

Magik Impregnator WB is water based impregnator for the protection of polish granite and marble surface. Its ecological formulation guarantees surface protection from dirt, water, oil, grease without changing natural look and aspect of surface. Compatible with humid or damp surface.

### ADVANTAGES

- Anti-stain
- Aesthetic looks remain as it is
- Ecological
- Durable
- Stain repellency

### SUITABLE SURFACE

- Internal or external marble
- Granite
- Natural stone
- Engineered stone

COVERAGE	COLOUR	PACK SIZE
1 L - 20/25 sq mt	Transparent	1 L

### PRODUCT SELECTION GUIDE - SURFACE WISE

PRODUCT CODE	SAND STONE	LIME STONE	NATURAL MARBLE	ARTIFICIAL MARBLE	GRANITE	BRICK	CONCRETE	CEMENT PLASTER	VITRIFIED TILES
S218			✓	✓	✓				
S222	✓	✓	✓	✓	✓				
S223			✓	✓	✓		✓		
S224			✓	✓	✓		✓		
S225			✓	✓	✓		✓		
S226	✓	✓				✓	✓	✓	
S227			✓	✓	✓				
S231						✓	✓	✓	
S237			✓	✓	✓				✓
S239	✓	✓	✓	✓	✓				✓



**S231**

## MAGIK BRICK & CONCRETE SEALER

Magik Brick & Concrete Sealer is an ecological formulation which protects brick and concrete from moisture. The anti-stain action is due to its technologically advance formation, protecting deep inside the brick pores for a long period of time. Magik Brick & Concrete Sealer does not change natural aspect of the surface and it will not create any type of film or plastic effect while allowing vapour to escape and is UV resistant.

### ADVANTAGES

- Ecological
- UV stable
- Good resistance
- Excellent stain proof property
- Good resistance against atmospheric condition

### SUITABLE SURFACE

- Brick
- Concrete
- RCC
- Plaster

COVERAGE	COLOUR	PACK SIZE
1 L - 5/7 sq mt	Transparent	1 L, 20 L

**S218**

## MAGIK IMPREGNATOR SB

Magik Impregnator SB is water based impregnator for the protection of polish granite and marble surface. Its unique formulation guarantees surface protection from dirt, water, oil, grease with giving a enhancing look of surface.

### ADVANTAGES

- Anti-stain
- Aesthetic looks remain as it is
- Ecological
- Durable
- Stain repellency

### SUITABLE SURFACE

- Internal or external marble
- Granite
- Natural stone
- Engineered stone

COVERAGE	COLOUR	PACK SIZE
1 L - 20/25 sq mt	Transparent	1 L

**S226**

## MAGIK SEALER

Magik Sealer is an ecological formulation which protects stones from moisture and general natural stain such as mud, mildew and atmospherical changes. The anti-stain action is due to its technologically advance formation and provides protection deep inside the stone pores for a long period of time. Magik Sealer does not change natural aspect of the stone surface and does not create any type of film or plastic effect while allowing vapour to escape and is UV resistant.

### ADVANTAGES

- Ecological
- UV stable
- Good resistance
- Excellent stain proof property
- Good resistance against atmospheric condition

### SUITABLE SURFACE

- Sand stone
- Terra cotta
- Natural stone
- Vertical surface

COVERAGE	COLOUR	PACK SIZE
1 L - 5/7 sq mt	Transparent	1 L, 5 L, 10 L, 20 L

**S237**

## MAGIK IMPREGNATOR PLUS

Solvent based stain proofing and oleophobic property to protect natural stone, artificial stone, vitrified tiles whether it is polished or unpolished.

### ADVANTAGES

- Anti-stain
- Oil resistance
- Durable
- Penetrating

### SUITABLE SURFACE

- Marble
- Granite
- Artificial stone
- Sand stone
- Engineered stone

COVERAGE	COLOUR	PACK SIZE
20-25 sq.mt	Transparent	1 L

### PRODUCT SELECTION GUIDE - APPLICATION WISE

PRODUCT CODE	BACK SIDE SEALING	STONE DENSIFIER	EDGE SEALING	WATER REPELLENCY	FOOD STAIN RESISTANCE	WINE STAIN RESISTANCE	GLOSS ENHANCER	COLOUR ENHANCING & SEALING	GROUT SEALING	LIME STAIN RESISTANCE
S218			✓		✓			✓	✓	
S222	✓		✓							
S223		✓			✓		✓			
S224		✓			✓		✓			
S225		✓			✓		✓			
S226			✓	✓						
S227			✓	✓	✓				✓	
S231				✓						
S237			✓	✓	✓				✓	
S239			✓	✓	✓	✓			✓	✓



# ENHANCER

## Enhancing Stone Protectors

**E350**

### MAGIK WETLOOK WB

Magik Wetlook WB is a unique zero VOC water based product to give matte colour effect to natural stone without disturbing the clarity of the stone pattern. Product provides permanent wetlook to stone.

#### ADVANTAGES

- Matte enhancing effect
- Non yellowing
- UV stable
- Non filming

#### SUITABLE SURFACE

- Textured marble
- Flame granite
- Honed marble
- Sand stone
- Slate stone
- Polish surface



COVERAGE	COLOUR	PACK SIZE
1 L - 7/8 sq mt	Transparent	1 L

**E351**

### MAGIK WETLOOK SB

Magik Wetlook SB protects the stone from moisture and general stain such as oil, grease, dirt, food, mud and mildew. Magik Wetlook SB is recommended to protect and provide satin colour enhancing of the natural stone without disturbing the clarity of the stone pattern. The anti-stain action and enhancing property is due to technologically advanced formulation.

#### ADVANTAGES

- Matte enhancing effect
- Non yellowing
- UV stable
- Anti-stain

#### SUITABLE SURFACE

- Textured marble
- Flame granite
- Honed marble
- Sand stone
- Slate stone



COVERAGE	COLOUR	PACK SIZE
1 L - 4/6 sq mt	Transparent	1 L





**E344****MAGIK DARKNER**

Sealer also includes an enhancement of the surface of natural polish as well as rough surface. This cure coating will give great adhesion and durability with superior water and UV stabilization.

**ADVANTAGES**

- Water based
- UV stabilization
- Very good adhesion
- VOC compliant

**SUITABLE SURFACE**

- Marble
- Granite
- Sand stone
- Slate stone
- Concrete

COVERAGE	COLOUR	PACK SIZE
1 L - 7-8 sq mt	Transparent	1 L

**E346****MAGIK DARKNER SB**

Magik Darkner SB is a solvent based penetrating liquid to enhance surface of any stone whether it is polish, flamed or rough. Once the product is cured it has a good weather stability and will increase the aesthetic look of the surface.

**ADVANTAGES**

- Good enhancing property
- Breathable
- Durable
- Nanotechnology

**SUITABLE SURFACE**

- Marble
- Granite
- Sand stone
- Lime stone

COVERAGE	COLOUR	PACK SIZE
1 L - 7-8 sq mt	Transparent	1 L

**E347****MAGIK DARKNER SUPER**

Magik Darkner Super is a versatile product specially designed for enhancing the colour of any granite whether it is polished, stained, antique or rough. It gives long term effect to the interior and exterior surfaces.

**ADVANTAGES**

- Improves colour shade extremely well
- Will make surface homogeneous
- Long term effect

**SUITABLE SURFACE**

- Polished granite
- Stained granite
- Antique granite
- Rough granite

COVERAGE	COLOUR	PACK SIZE
1 L - 20-30 sq mt	Transparent	1 L

**E334****MAGIK GLOSS**

Magik Gloss is a solvent based impregnator for protection and enhancement of polish granite and marble surface. Its ecological formulation guarantees surface protection from dirt, water, oil, grease with enhancing surface look.

**ADVANTAGES**

- Anti-stain
- Enhancing
- Ecological
- Durable
- Stain repellency

**SUITABLE SURFACE**

- Internal or external marble
- Granite
- Natural stone
- Engineered stone

COVERAGE	COLOUR	PACK SIZE
1 L - 20/25 sq mt	Transparent	1 L

**E348****MAGIK SHINER WB**

Magik Shiner is a specific water based wax emulsion for application on pre treated porous and polish surface. Application creates a durable and enhancing colour of surface allowing easy further maintenance of surface. Highly suitable for large commercial settings.

**ADVANTAGES**

- Good enhancing property
- Breathable
- Durable

**SUITABLE SURFACE**

- Polish marble
- Polish granite

COVERAGE	COLOUR	PACK SIZE
1 L - 7-8 sq mt	Milky hazy	1 L, 5 L

**E349****MAGIK SHINER SB**

Magik Shiner SB is a solvent based liquid to maintain and increase the gloss of any polished surface of marble or granite. Simple application will enhance and also seal the treated surface.

**ADVANTAGES**

- Seals the surface
- Will hide fishers
- Maintains homogenous look

**SUITABLE SURFACE**

- Polish marble
- Polish granite

COVERAGE	COLOUR	PACK SIZE
1 L - 7-8 sq mt	Transparent	1 L





**E342****MAGIK TOUGH COAT**

Two part solvent based system with an unusual chemical of abrasion resistance for parking as well as applicable on any rough surface. Cure coating has excellent resistance against alkali as well as acidic household chemical. Cure film has very good enhanced performance property. Available in matte & gloss finish. Part A : Resin, Part B : Hardner

**ADVANTAGES**

- Nanotechnology
- Outstanding abrasion resistance
- Excellent mechanical & chemical resistance
- Super mar & scuff resistance

**SUITABLE SURFACE**

- Rough marble
- Rough granite
- Sand stone
- Slate stone
- Concrete
- Paver blocks

COVERAGE	COLOUR	PACK SIZE
1 L - 7-8 sq mt	A- Milky hazy B -	1.33 kg (A - 1.00, B - 0.33 KG)

**E340****MAGIK HIGH GLOSS SEALER**

Magik High Gloss Sealer is a water based glossy film forming for rough natural stone. Formulation provides excellent wetting effect of the stone surface altering the celerity of the stone pattern.

**ADVANTAGES**

- Wetlook effect
- Non yellowing
- UV resistance

**SUITABLE SURFACE**

- Paver blocks
- Concrete
- Brick

COVERAGE	COLOUR	PACK SIZE
1 L - 7-8 sq mt	Milky hazy	1 L, 5 L

**PRODUCT SELECTION GUIDE - SURFACE WISE**

PRODUCT CODE	SAND STONE	NATURAL MARBLE	ARTIFICIAL MARBLE	GRANITE	BRICK	CONCRETE	CEMENT PLASTER	ROUGH SURFACE
E334		✓	✓	✓				
E340					✓	✓	✓	
E342								✓
E344		✓		✓				
E346		✓	✓	✓				
E347				✓				
E348		✓	✓	✓				
E349		✓	✓	✓				
E350		✓		✓				
E351	✓							✓

**PRODUCT SELECTION GUIDE - APPLICATION WISE**

PRODUCT CODE	PERIODIC MAINTENANCE	ROUGH SURFACE DARKENING (PENETRATING)	ROUGH SURFACE DARKENING (FILM FORMING)	POLISH SURFACE DARKENING (PENETRATING)	POLISH SURFACE DARKENING (FILM FORMING)	POLISHING & SEALING	GRANITE DARKENING	PAVER CONCRETE	PARKING AREA
E334						✓			
E340								✓	✓
E342			✓						
E344		✓		✓					
E346		✓		✓					
E347		✓		✓					
E348	✓								
E349	✓								
E350		✓		✓					
E351			✓						



**A777**

## MAGIK ANTI SLIP

Magik Anti Slip prevents people suffering from incidents caused due to wet and slippery floors. Unique formulation of product does not make any coating and will not peel at any time. Through a chemical reaction Magik Anti Slip creates a micro structure on the surface, leaving the floor slip resistance. Part A : Cleaner, Part B : Activator, Part C : Neutralizer

### ADVANTAGES

- Eliminates accident caused by slippery floor
- Effective under wet condition
- Can be used indoor or outdoor

### SUITABLE SURFACE

- Ceramic tiles
- Porcelain tiles
- Vitrified tiles
- Granite
- Stone terrazzo



COVERAGE	COLOUR	PACK SIZE
1 L - 15/20 sq mt	Part A - Transparent Part B - Transparent Part C - Transparent	Part A - 0.5 L Part B - 0.5 L Part C - 0.5 L





# POLISHING COMPOUND

High Gloss With Anti Slip Effect

**P446**



## MAGIK LIQUID POLISH MARBLE

Magik Liquid Polish Marble is a water based multi functional polishing cream specifically for the maintenance and restoration of dull surfaces, scratches and watermark. Application unifies surface aspects, while increasing surface gloss matching result obtained by traditional polishing powder on surface. Available in Light & Dark variants.

### ADVANTAGES

- Fast & effective
- Economical
- Durable
- Hi gloss
- No wax

### SUITABLE SURFACE

- Polish Marble
- Engineered Marble
- Terrazzo
- Lime stone

COVERAGE	COLOUR	PACK SIZE
1 kg - 40/50 sq mt	Light ivory	1 kg

**P447**



## MAGIK LIQUID POLISH GRANITE

Magik Liquid Polish Granite is a water based polishing cream specifically for the maintenance and restoration of granite undergoing intense foot traffic or dull surfaces, scratches and water mark. Cream will give more gloss effect then traditional polishing powder.

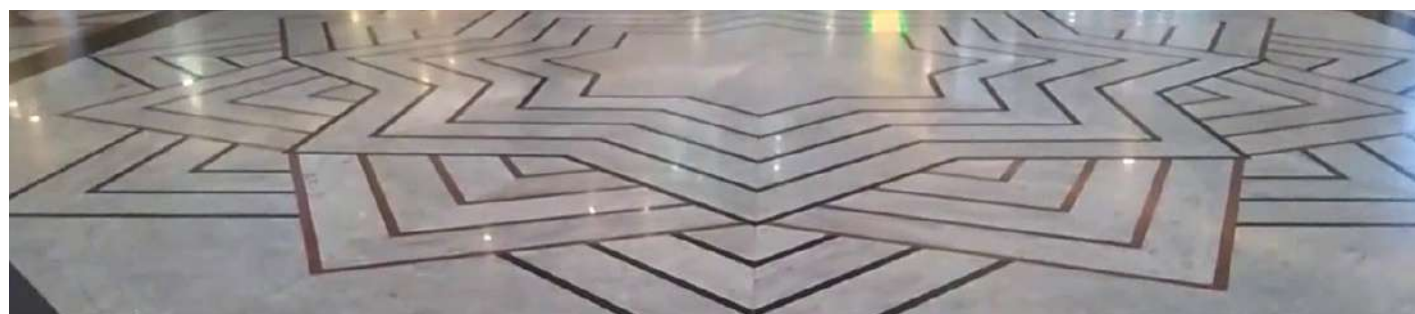
### ADVANTAGES

- Fast & effective
- Economical
- Durable
- Hi gloss
- No wax

### SUITABLE SURFACE

- Polish granite

COVERAGE	COLOUR	PACK SIZE
1 kg - 40/50 sq mt	Light ivory	1 kg





**P444****MAGIK POLISH POWDER**

Magik Polish Powder is a high performance polish powder containing compact calcium useful for marble, granite and lime stone. The product removes all dull itches, watermarks and surface scratches while renewing the surface with original gloss and unifying the surface aspect. Application hardens the natural surface of the stone, therefore increasing resistance to general foot traffic. *Available in White & Yellow colour.*

**ADVANTAGES**

- Nice luster finish & long lasting
- Excellent glossy effect
- Moderate hydrophobic property
- Wash resistance
- Excellent coverage
- High temperature resistance
- Moss & fungus resistance
- Longer gloss span for surface

**SUITABLE SURFACE**

- Polish marble
- Polish granite
- Engineered marble

\* Magik Polish Powder White available in 1 kg only

COVERAGE	COLOUR	PACK SIZE
1 kg - 60-100 sq mt	Crystal white, yellow	0.5 kg, 1 kg, 2 kg, 5 kg, 10 kg, 20 kg

**P449****MAGIK GRANITE RESTORATION PASTE**

Magik Granite Restoration Paste is a unique formulation designed for all type of granite, it might be light colour, medium or dark colour. Application sharpens surface aspect, while increasing surface gloss matching result obtained by diamond honing in only a few passes.

**ADVANTAGES**

- Strong glossy property
- Strong non-stick property
- Excellent cleaning
- No foot print
- Easy to use
- No wax

**SUITABLE SURFACE**

- Polish granite

COVERAGE	COLOUR	PACK SIZE
1 kg - 40/50 sq mt	White hazzy	1 kg

**P445****MAGIK CRYSTALLIZER**

Magik Crystallizer is a liquid for calcareous stone floor. The product provides a high gloss on marble as well as kota stone without building a film on top. Floor gets more wear resistance and acid sensitivity is reduced.

**ADVANTAGES**

- Enhance the natural appearance of the stone
- Easy daily cleaning
- Slip resistance
- Non filming
- Prolongs grindings intervals
- Reduction of acid sensitivity

**SUITABLE SURFACE**

- Marble
- Granite
- Kota
- Calcareous stone

COVERAGE	COLOUR	PACK SIZE
1 kg - 60-100 sq mt	Light pink	1 kg, 5 kg

**PRODUCT SELECTION GUIDE - APPLICATION WISE**

PRODUCT CODE	SAND STONE	LIME STONE	NATURAL MARBLE	ARTIFICIAL MARBLE	GRANITE	BRICK	CONCRETE	CEMENT PLASTER	ROUGH VITRIFIED TILES
P444			✓	✓					
P445		✓	✓	✓	✓		✓		
P446			✓						
P447					✓				
P449					✓				



**C552**

## MAGIK IRON STAIN REMOVER

Magik Iron Stain Remover is an alkaline based paste to remove iron stain. Unique blend of product reacts with iron stain and converts it in to purple colour and easily removes the stain.

\*\*In very porous stone there is chance of accumulating a purple colour inside stone. So to avoid the purple colour the use of Magik Stain Remover or Magik Whitener is highly recommended. \*\*

### ADVANTAGES

- Excellent cleaning property
- Suitable for any type of stone
- Versatile
- Rapid cleaning
- Non acidic

### SUITABLE SURFACE

- Any natural stone
- Vitrified tiles



COVERAGE	COLOUR	PACK SIZE
N/A	Hazy paste	50 g

**C558**

## MAGIK SCALE REMOVER

Magik Scale Remover is an acidic based formulated detergent for the complete removal of scales from wash room tiles, yellow stain, mortar residues from newly fixed tiles and cement residue, efflorescence from surface. Also recommended to remove cement joint colour from tiles.

### ADVANTAGES

- Excellent cleaning
- Rapid
- Easy cleaning of the tough stain

### SUITABLE SURFACE

- Sand stone
- Honed stone
- Quartz agglomerates
- Ceramic
- Terra cotta tiles
- Polish/rough granite
- All surface resistance to acid



COVERAGE	COLOUR	PACK SIZE
N/A	Transparent	1 L



**C555**

## MAGIK POLISH CLEANER

Magik Polish Cleaner is a pH neutral detergent which removes dirt, wax, marker pen marking and cement residues from surface without damaging natural property of surface.

### ADVANTAGES

- Excellent cleaning property
- Rapid
- Heavy cleaning effect
- Powerful on tiles

### SUITABLE SURFACE

- All natural stone
- Tile
- Quartz
- Terra cotta

COVERAGE	COLOUR	PACK SIZE
N/A	Transparent	1 L

**C565**

## MAGIK GRANITE & TILE CLEANER

Water based pH acidic product to clean non calcareous surface like granite, tile, ceramic tile, concrete and surface resistance to acid.

### ADVANTAGES

- Easy cleaning
- Rapid action
- Remove iron stain from surface
- Clean construction residue

### SUITABLE SURFACE

- Granite
- Vitrified tile
- Ceramic
- Surface resistance to acid

COVERAGE	COLOUR	PACK SIZE
N/A	Transparent	5 L

**C559**

## MAGIK ACIDIC CLEANER

Magik Acidic Cleaner is an acidic based detergent, specifically manufactured for the removal of grout and cement residue from the surface. Magik Acidic Cleaner is a very good substitute to traditional HCL, due to its formulation and specific cleaning agent which will easily clean cement from recently set surface without damaging original colour of tiles.

### ADVANTAGES

- Powerful detergent formula
- Easy cleaning
- Economical

### SUITABLE SURFACE

- Any type of tiles
- RCC

COVERAGE	COLOUR	PACK SIZE
N/A	Transparent	1 L

**C561**

## MAGIK RUST REMOVER

Magik Rust Remover is a unique formulation of acidic based substances. It is a heavy duty detergent manufactured for the removal of common surficial rust stain to deep rust stain or any other metallic reddish brown mark such as - ferric oxide stain on granite surface. Highly recommended for granite stone.

### ADVANTAGES

- Fast acting
- Powerful
- High cleaning power
- Concentrate

### SUITABLE SURFACE

- Polish granite
- Honed granite
- Rough granite
- Ceramic tile
- Glazed tile
- Vitrified tile

COVERAGE	COLOUR	PACK SIZE
N/A	Transparent	1 L

**C557**

## MAGIK EGFR

Magik EGFR is a pH neutral detergent which removes oil, grease, bituminous stain, carbon dust, any stickiness on surface. The product is capable of removing cement residues, marker pen marking without damaging the natural property of surface with ease. Highly recommended to remove Epoxy Grout Film from any surface.

### ADVANTAGES

- Powerful
- Heavy duty
- Rapid action
- Good cleaning

### SUITABLE SURFACE

- All natural stone
- Tile
- Quartz
- Terra cotta
- Glass mosaic

COVERAGE	COLOUR	PACK SIZE
N/A	Transparent	0.4 L, 1 L

**C560**

## MAGIK WHITNER

Magik Whitner is a special blend of acidic based substance. It is a heavy duty detergent specifically manufactured to remove yellowish effect from marble or granite without damaging or dulling polished surface. Highly recommended to remove yellowish effect from white marble like thassos, satvrio or any white marble or granite.

### ADVANTAGES

- Fast acting
- Removes yellowish effect
- High cleaning power

### SUITABLE SURFACE

- Marble
- Granite

COVERAGE	COLOUR	PACK SIZE
N/A	Transparent	0.4 L, 1 L





**C556****MAGIK TILE & CONCRETE CLEANER**

Magik Tile & Concrete Cleaner is an acidic based detergent for the removal of cement residue, yellow stain without damaging the surface aspect or joint.

**ADVANTAGES**

- Excellent cleaning property
- Rapid
- Heavy cleaning effect
- Powerful on tiles

**SUITABLE SURFACE**

- Terra cotta tiles
- Ceramic tiles
- RCC

COVERAGE	COLOUR	PACK SIZE
N/A	Transparent	1 L

**C569****MAGIK BSR CLEANER**

Unique alkaline pH balanced formulation of Magik BSR Cleaner will remove all of algae, fungus and black spots which is caused due to weather changes on outside stone. Added special detergent will make surface very clean without changing the aesthetic look of the surface.

**ADVANTAGES**

- No changes in aesthetic look
- Removes black spots, algae and fungus
- Non acidic

**SUITABLE SURFACE**

- Natural stone
- Artificial stone

COVERAGE	COLOUR	PACK SIZE
N/A	Transparent	1 L, 5 L

**C551****MAGIK STAIN REMOVER**

Magik Stain Remover is an alkaline based floor cleaner derived from high quality substance for removing deep stain like wood stain, pan masala stain, ink stain, tea coffee stain or maximum of all stains expect iron stain. Product does not damage or harm the natural aspect of stone.

**ADVANTAGES**

- Excellent cleaning property
- Effective on organic substance
- Less odor
- High penetrating property

**SUITABLE SURFACE**

- Any natural stone
- Vitrified tiles

COVERAGE	COLOUR	PACK SIZE
N/A	Part A - Transparent Part B - White	Part A - 50 g Part B - 50 g

**C571****MAGIK AP CLEANER**

Water based pH neutral cleaner for all surface to remove maximum of all type of stains.

**ADVANTAGES**

- Anti-corrosive
- Eco friendly
- pH neutral
- Efflorescence and salt remover
- Gloss retention

**SUITABLE SURFACE**

- Stone
- Tile
- Granite
- Wood
- Leather

COVERAGE	COLOUR	PACK SIZE
N/A	Transparent	1 L

**PRODUCT SELECTION GUIDE - SURFACE WISE**

PRODUCT CODE	SAND STONE	LIME STONE	NATURAL MARBLE	ARTIFICIAL MARBLE	GRANITE	CONCRETE	CEMENT PLASTER	VITRIFIED TILES	METAL	GLASS
C551			✓	✓	✓					
C552			✓	✓	✓					
C554										
C555	✓	✓	✓	✓	✓					
C556						✓	✓	✓		
C557			✓	✓	✓					
C558					✓	✓	✓	✓		
C559					✓	✓		✓		
C560			✓	✓	✓					
C561						✓	✓			
C562								✓		
C563										✓
C565										
C569	✓	✓	✓	✓	✓	✓	✓			
C571	✓	✓	✓	✓	✓	✓	✓	✓	✓	
C572									✓	

**C562****MAGIK GROUT CLEANER**

Magik Grout Cleaner is heavy duty acidic detergent manufactured for cleaning of cement based grout or epoxy based grout from black stain, dirt and make grout colour as new one.

**ADVANTAGES**

- Fast acting
- Powerful
- High cleaning power
- Concentrate

**SUITABLE SURFACE**

- Grout in between tiles only

COVERAGE	COLOUR	PACK SIZE
N/A	Transparent	1 L

**C563****MAGIK GLASS CLEANER**

Magik Glass Cleaner is a water based effective glass cleaner to clean glass surface from dust, water spot and from any sticky substance. Used on variety of surfaces including window, mirrors, plexiglass, bathroom fixer.

**ADVANTAGES**

- Economical
- Rapid
- Excellent cleaning powder

**SUITABLE SURFACE**

- Any type of glass

COVERAGE	COLOUR	PACK SIZE
N/A	Transparent	0.5 L, 1 L

**C572****MAGIK SSC PASTE**

Specially designed thixotropic paste added a nano detergent cleaning particle to remove salt and efflorescence and water spots from bathroom fittings.

**ADVANTAGES**

- pH neutral
- Good cleaning property
- Removes salt & efflorescence

**SUITABLE SURFACE**

- Any metal surface

COVERAGE	COLOUR	PACK SIZE
N/A	Transparent	50 g

**C554****MAGIK NATURAL CLEANER**

Magik Natural Cleaner is a concentrated pH neutral floor cleaner for daily maintenance of every floor surface. The product formulation cleans effectively while leaving a pleasant fresh fragrance.

**ADVANTAGES**

- Excellent cleaning property
- Very low douse (20-50 g/L)
- Versatile

**SUITABLE SURFACE**

- Natural stone
- Porcelain stone
- Ceramic

COVERAGE	COLOUR	PACK SIZE
N/A	Transparent	1 L

**PRODUCT SELECTION GUIDE - APPLICATION WISE**

PRODUCT CODE	IRON STAIN	SCALE STAIN	REGULAR MAINTENANCE	WAX REMOVER	CONSTRUCTION RESIDUE	RUST STAIN	EPOXY HAZ FILM	GROUT STAIN	WOOD STAIN	BLACK SPOT	ALGAE REMOVER	GLASS CLEANING	SS FITTING	STAIN ON MARBLE
C551														✓
C552	✓					✓								
C554														
C555			✓											
C556					✓									
C557			✓	✓			✓							
C558		✓			✓									
C559					✓	✓								
C560									✓					
C561						✓								
C562								✓						
C563												✓		
C565		✓			✓									
C569										✓	✓			
C571		✓		✓	✓							✓		
C572													✓	



# BONDING AGENT

Non Shrinking With Good Binding

**B888**

## MAGIK RAPID

Magik Rapid is a two component epoxy chemical product, which is required when fast curing is needed. It is suitable to fix molding patti where instant fixing is required. *Part A : Resin, Part B : Hardner*



### ADVANTAGES

- Easy to implement
- Hardness without shrinkage
- Suitable for any kind of marble
- No primer required
- Fast setting

### SUITABLE SURFACE

- Any stone

COVERAGE	COLOUR	PACK SIZE
1 L - 10/30 sq mt	Transparent	2 kg (A - 1, B - 1)

**B889**

## MAGIK GRIP

Magik Grip is a two component epoxy chemical product, which with its high strength provides mechanical key on back side of stone as well as to fix one stone to another. *Part A : Resin, Part B : Hardner*



### ADVANTAGES

- Easy to implement
- Hardness without shrinkage
- Very good bonding capacity

### SUITABLE SURFACE

- Any stone

COVERAGE	COLOUR	PACK SIZE
1 L - 10/30 sq mt	Transparent	0.45 kg (A - 0.25, B - 0.20) 0.90 kg (A - 0.50, B - 0.40) 1.80 kg (A - 1.00, B - 0.80) 9.00 kg (A - 5.00, B - 4.00)







# DIAMOND PADS

## High Glaze Surface Finish

**M**



### SUPER GLAZE DIAMOND PADS

The ultra-flexible style pad offers simple and fast restoration of the floor for a great shine which is designed for simple handling of the polished floor, the easiest, most effective restoration and maintenance. Compared with other pads, deeper resin-coated diamond penetration has a longer lifespan. Any repair equipment and conventional cleaning machine can be used with this method. This pad is used with any machine such as a 160 RPM single disc machine or scrubber machine or high-speed brushing machine for the restoration of the polished floor with a very limited amount of water.

#### ADVANTAGES

- Works only with water
- No chemical required
- Adaptable with any machine
- Anti-slip effect
- Cost-effective

#### SUITABLE SURFACE

- Marble
- Granite

#### AVAILABLE VARIANTS

#### GRANITE RANGE

**M5050**

##### Magik Granite Diamond Polishing Pad

A state of art product particularly designed for granite to give a super finish gloss surface for a good enhancing effects.



COVERAGE	COLOUR	PACK SIZE
1 PAD (17") - 400-500 sq mt	N/A	3.5" Pad 17" Pad

#### MARBLE RANGE

**M1000**

##### Magik Polishing Pad #1000 - Diamond Red

To finish with a very good cleaning and well prepared for subsequent diamond steps, it will remove scratches from the surface and leave a satin matt finish.

**M2500**

##### Magik Polishing Pad #2500 - Diamond Blue

By removing minor scratches, it will give a moderate gloss and resin bonded liquid diamond restores the floor and make a ready floor for the diamond grey pad.

**M3000**

##### Magik Polishing Pad #3000 - Diamond Grey

The grey diamond offers a mirror-like glass finish and, when used regularly, will retain a perfect gloss on the surface.

**M4000**

##### Magik Polishing Pad #4000 - Diamond Gold

A revolutionary chemical as well as a diamond impregnated pad that gives excellent mirror gloss and hardens the floor and also protects the treated floor surfaces. This pad can be used after Magik Polishing pad # 3000 or used as a regular gloss maintenance on the floor.



COVERAGE	COLOUR	PACK SIZE
1 PAD (17") - 700-800 sq mt	N/A	3.5" Pad 17" Pad



# STONE ADHESIVE

High Strength Adhesive For Stone

**1005**

## MAGIK BOND

Magik Bond containing cement and silica powder, it can be combined with water for the installation of small and medium-sized ceramic floor tiles in interior areas using the thin-set method of installation.

Application: Internal floor application

### ADVANTAGES

- Used for fixing ceramic tiles for the floor
- Smooth and creamy texture
- Ideal for glazed tiles for the floor
- Compliance to IS 15477 Type 1 Adhesive

### SUITABLE SURFACE

- Cement Mortar Beds
- Cement Plaster
- Brick Masonry
- Cement Terrazzo



COVERAGE	COLOUR	PACK SIZE
3 mm Bed - 55 to 60 sq ft	Grey	20 kg

**1010**

## MAGIK BOND PLUS

Magik Bond Plus is a smooth and creamy thin-set polymer-based adhesive for the installation of ceramic wall and floor tiles, vitrified tiles, small format natural stones in interior areas.

Application: Internal floor and wall applications

### ADVANTAGES

- Thixotropic
- Tile on tile application
- Ideal for vitrified and glazed tiles up to 2 ft x 4 ft
- Compliance to IS 15477 Type 2 Adhesive

### SUITABLE SURFACE

- Cement Mortar beds
- Existing tiles/stones on floor & wall up to 10 sq ft
- Cement plaster
- Brick masonry
- Cement terrazzo



COVERAGE	COLOUR	PACK SIZE
3 mm Bed - 55 to 60 sq ft	Grey	20 kg





2050

## MAGIK BOND EXTRA GREY



Magik Bond Extra Grey is designed especially for interior and exterior floor and wall installation of all types of natural stones, engineered stone floor, precast terrazzo, glass mosaic tiles, semi-vitreous tiles. The good underwater shear bond allows this product to be used for wet areas like swimming pools, sauna, water bodies, and washrooms. Can also be used as a slurry bond adhesive in wet on wet applications, tile on tile applications. Application: Can be used for interior, exterior floor, and wall installations

### ADVANTAGES

- Suitable for various tiles, marble granite & other stones
- Suitable for various substrate
- Ideal for size up to 3 ft x 6 ft on floor and wall
- Compliance to IS 15477 Type 2 Adhesive

### SUITABLE SURFACE

- Concrete
- Cement mortar beds
- Ceramic tile and stone
- Concrete masonry
- Cement plaster
- Brick masonry
- Cement terrazzo
- Gypsum wallboard
- Vitreous tiles
- Semi-vitreous tiles
- Glass mosaic tiles
- Precast terrazzo
- Natural stones

COVERAGE	COLOUR	PACK SIZE
3 mm Bed - 55 to 60 sq ft	Grey	20 kg

5150

## MAGIK FLEX

Multipurpose two-component polyurethane thin-set adhesive for fixing tiles & stones on the interior and exterior floor and wall. Designed especially for interior and exterior floor and wall installation of all types of ceramic tiles, vitrified tiles, semi-vitrified tiles, engineered stone, stone, and tile over concrete and on a variety of substrates including metal substrates and dry wall boards. *Part A : Resin, Part B : Hardner*

### ADVANTAGES

- Two component, just mix and use
- High strength chemical resistance
- Economical
- Easy to use
- Water, freezing, thermal shock resistance
- Flexible and heat resistance
- Compiles to EN/ISO with R2T classification

### SUITABLE SURFACE

- Concrete
- Vacuum dewatered flooring
- Tremix
- Metal floor and wall
- All types of tiles and stones
- All types of wood and ply wood
- Epoxy or PU resin based substrates

COVERAGE	COLOUR	PACK SIZE
	Part A - Light Ivory Part B - Light Grey	Part A - 4.35 kg Part B - 0.65 kg



2060

## MAGIK BOND EXTRA WHITE



Magik Bond Extra White is designed especially for interior and exterior floor and wall installation of all types of glass mosaic, white marble, engineered stone, precast terrazzo. The good underwater shear bond allows this product to be used for wet areas like swimming pools, sauna, water bodies, and washrooms. Can also be used as a slurry bond adhesive in wet on wet applications, tile on tile applications. Application: Can be used for interior, exterior floor, and wall installations

### ADVANTAGES

- Suitable for various tiles, marble granite & other stones
- Suitable for various substrate
- Ideal for size up to 3 ft x 6 ft on floor and wall
- Compliance to IS 15477 Type 2 Adhesive

### SUITABLE SURFACE

- Concrete
- Cement mortar beds
- Ceramic tile and stone
- Concrete masonry
- Cement plaster
- Brick masonry
- Cement terrazzo
- Gypsum wallboard
- Vitreous tiles
- Semi-vitreous tiles
- Glass mosaic tiles
- Precast terrazzo
- Natural stones

COVERAGE	COLOUR	PACK SIZE
3 mm Bed - 55 to 60 sq ft	White	20 kg







# CONSTRUCTION

High Performance Construction Chemicals

## X700

### MAGIK SBR 30

SBR based Mortar and Screed modifier and bonding agent are for the making of polymer-modified mortar and screeds, bonding agent, repair of worn, damaged, and spalled concrete, slurry coat as a based for waterproofing.

#### ADVANTAGES

- Single component
- Excellent bond
- Durable
- Improves tensile and flexural properties

#### SUITABLE SURFACE

- Any concrete surface

COVERAGE	COLOUR	PACK SIZE
N/A	Milky White	1 L, 5 L, 20 L



## X751

### MAGIK CRETE

Magik Crete is a cement single component acrylic polymer waterproof composite coating membrane that is effective for waterproofing to concrete and masonry surfaces.

#### ADVANTAGES

- Non-toxic, non-flammable
- Provides a tough, impermeable waterproof membrane
- Excellent adhesion
- Protection from natural elements such as wind, rain, sunlight
- Breathable

#### SUITABLE SURFACE

- Roofs, terraces, and balconies
- Pools
- Fountains

COVERAGE	COLOUR	PACK SIZE
N/A		1 L, 5 L, 20 L



**X800****MAGIK MPC 30**

Magik MPC 30 is a PU modified acrylic waterproofing, polymer based product suitable for waterproofing of old and new roofs. The product is advised to be applied in three or more coats and each coat with different colours for monitoring correct thickness.

**ADVANTAGES**

- High Resistance
- Durable to climatic conditions
- Excellent Bond

**SUITABLE SURFACE**

- Concrete
- Screed concrete

COVERAGE	COLOUR	PACK SIZE
20 L - 60 sq mt	Milky White	20 L

**X850****MAGIK 2K GREY**

Magik 2K Grey is an acrylic modified membrane component consisting of Magik 2K Grey Powder and Magik 2K Grey Liquid Acrylic Powder. When mixed in a given ratio, a brushable coating is produced. Inbuilt polymer provides excellent surface bonding and makes the surface waterproof. The use of the fiber net is recommended.

**ADVANTAGES**

- Seamless waterproof coating
- Provide long-lasting carrier
- Tough and durable coating

**SUITABLE SURFACE**

- Concrete Surface

COVERAGE	COLOUR	PACK SIZE
28 kg - 90 sq mt	Transparent	Powder + Liquid 20 kg + 8 kg

**X720****MAGIK CONCRETE DENSIFIER**

Magik Concrete Densifier provides high end penetrating water repellent sealer that provides key benefits like Salt Protection, Dustproofer - Hardener, Sealer, Densifier. It is clear water-based, environmentally safe-to-use which gives salt resistant and dust proofer that hardens, seals, and makes fences to concrete and masonry surfaces. Magik Concrete Densifier reacts with siliceous materials to provide a permanent hydrophobic surface that protects concrete surfaces and masonry substrates without altering the natural appearance and texture.

**ADVANTAGES**

- For exterior and interior concrete (vertical and horizontal)
- Garage
- Parking
- Stained concrete
- Aesthetic look remain as it is
- Seals micro porosity of concrete
- Surface become hardener
- Prevents concrete erosion

**SUITABLE SURFACE**

- Concrete Surface

COVERAGE	COLOUR	PACK SIZE
1 L - 6 to 7 sq mt	Transparent	20 L

**X900****MAGIK LUBE**

Magik Lube is used as a most effective priming compound in low doses and as a pumping aid for concrete pumps. Magik Lube is a neutral, biodegradable, lubricating chemical additive designed to allow easier and improved pumping ability of concrete or grouts. Add 125 g of powder to 100-120 L of water and stir well.

**ADVANTAGES**

- The efficiency of the concrete pump gets increased
- Works as lubricant
- Ready to use, only water to be added

**SUITABLE SURFACE**

- Additive for concrete

COVERAGE	COLOUR	PACK SIZE
N/A	N/A	125 g

**X950****MAGIK SALT GUARD SEALER**

Magik Salt Guard Sealer is specifically designed as a surface primer with excellent resistance to water, alkali and efflorescence. The fine particle size allows good penetration into porous and chalky substrates to enhance the physical barrier to water transportation and acts as a chemical barrier to salt migration.

**ADVANTAGES**

- Long life appearance of top coat
- Ideal for high alkaline concrete
- Prevention of top coat defect

**SUITABLE SURFACE**

- Concrete Surface
- Exposed brick
- Plaster

COVERAGE	COLOUR	PACK SIZE
1 L - 60-75 sq.ft.	Milky White	5 L

**X917****MAGIK PROTECTION ROLL**

Magik Protection Roll is a unique water based adhesive gum which provides non-stickiness while removing it after use. Once applied, it will protect the floor while painting and construction activity is ongoing.

Available Size

1. 30 micron - 25 m x 1 ft
2. 60 micron - 50 m x 2 ft
3. 120 micron - 50 m x 2 ft

**ADVANTAGES**

- No stickiness on floor after removing
- No stain of gum
- Easily removable
- Patch repair can be done easily

**SUITABLE SURFACE**

- Marble
- Granite
- Tile
- Any hard surface

COVERAGE	COLOUR	PACK SIZE
N/A	N/A	N/A



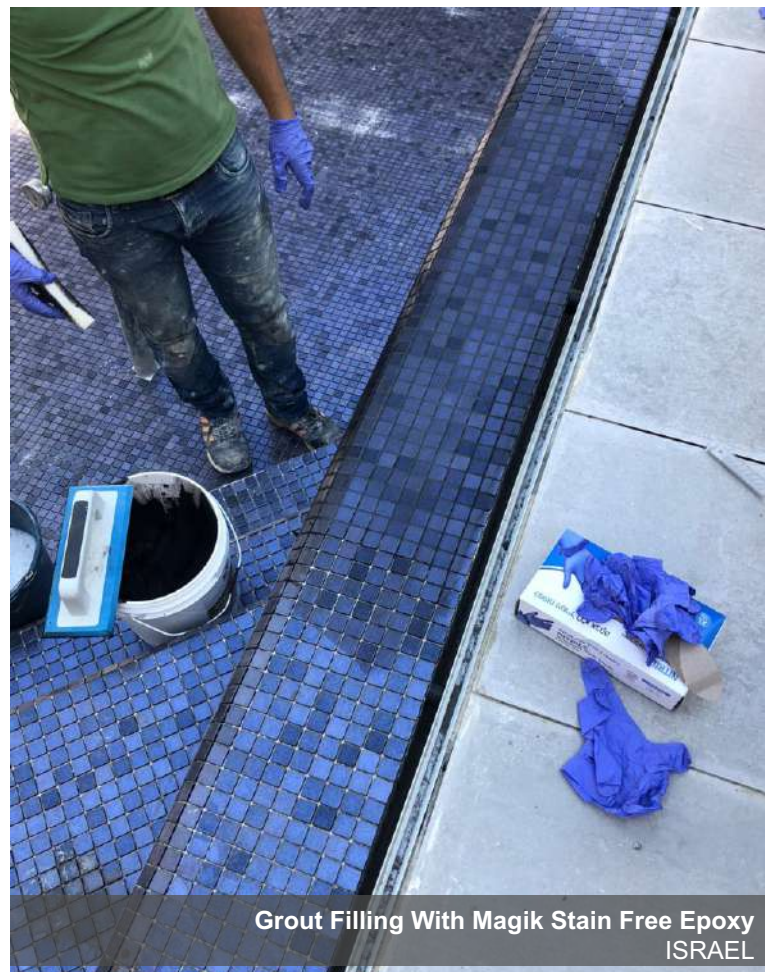




Cleaning With Special Chemical  
Ram Mandir, Ayodhya, INDIA



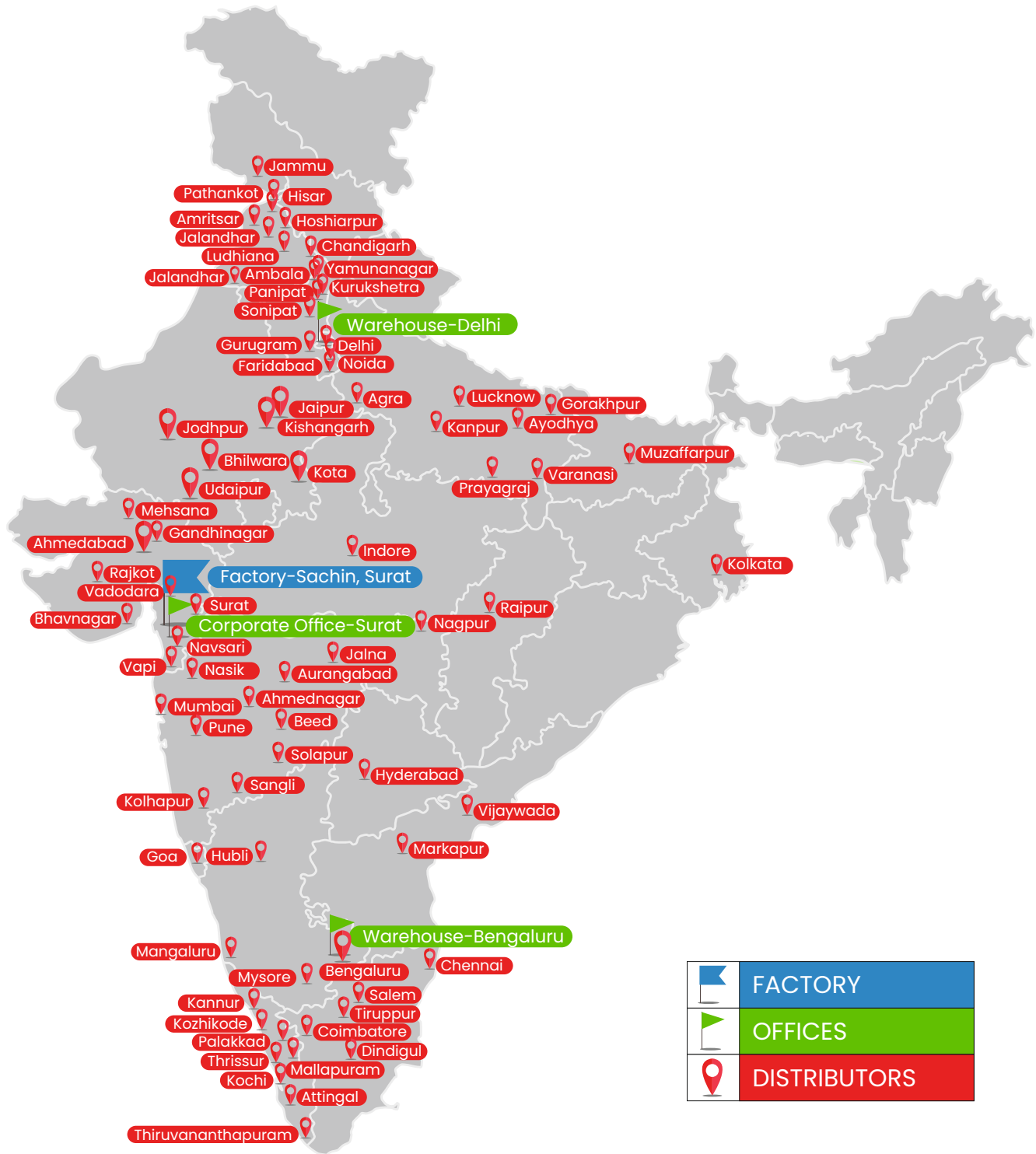
Cleaning with Magik Scale Remover  
TURKEY



Grout Filling With Magik Stain Free Epoxy  
ISRAEL



# NETWORK



## INTERNATIONAL PRESENCES

Israel - Turkey - USA - Nepal - Gulf - Nigeria - Yemen - South Korea - Bhutan

\*Map not to the scale & pin for presentation purpose only.

SCAN FOR  
CATALOG



A STONE CARE SOLUTION

STONE CARE • STONE ADHESIVE • CONSTRUCTION CHEMICAL

---

**Corporate Office**

418, Happy Hallmark Shoppers, Vesu-Abhava Road, Surat-395017, Gujarat, India.

**Manufacturing Unit**

C-5/4, Hojiwala Industrail Estate, Road No.8, Susml, Sachin, Surat-394230, Gujarat, India.

**Branch Office & Godown**

Bengaluru & Delhi

**Customer Care No :** 9099988272 . **Email Id :** info@marblemagik.com . **Website :** www.marblemagik.com

\*The data given in catalog for guideline only. The physical values are subject to normal manufacturing tolerances, colour and testing variances.  
The coverage & consumption figures are theoretical and do not allow for any additional material required due to surface porosity, surface profile, variations in level or wastage etc.